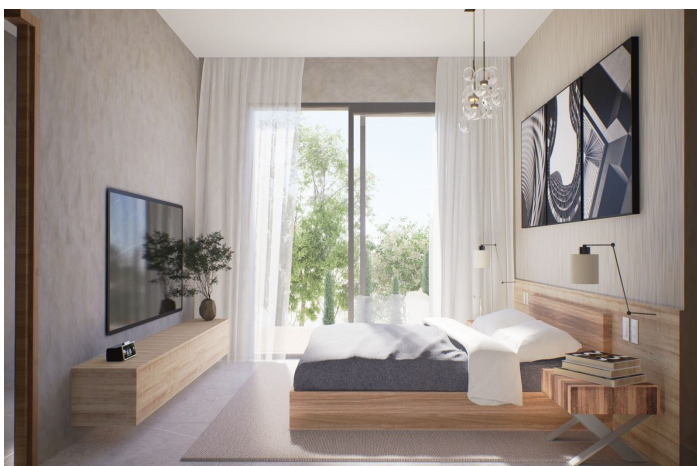
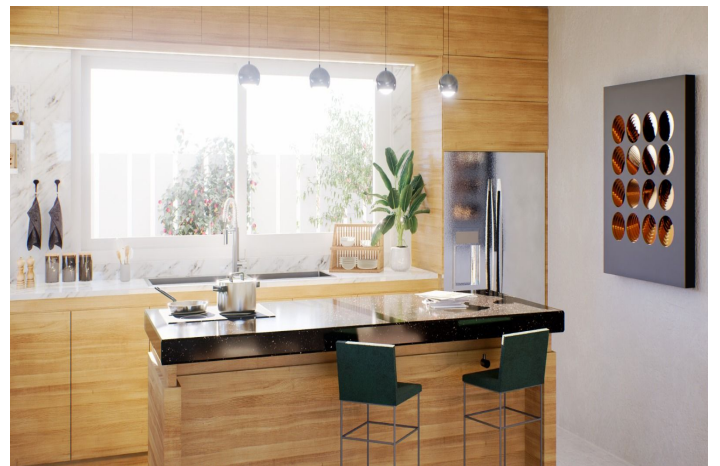




Detached Villa for sale in Alhaurín de la Torre, Alhaurín de la Torre

485,000 €

Reference: R4730371 Bedrooms: 3 Bathrooms: 3 Plot Size: 282m² Build Size: 165m² Terrace: 22m²







Valle del Guadalhorce, Alhaurín de la Torre

New Development - Delivery in December 2024

This is a new residential development designed and created from love. The development is for a semi-detached house in Alhaurín de la Torre, located in the beautiful community of Taralpe. The house has a build size of 165m² built on a 282m² plot. It is distributed over two floor with 3 bedrooms, 3 bathrooms, covered terrace, private pool, garden, and driveway for 2 cars.

This is a modern and contemporary semi-detached house with a minimalist design creating an abundance of natural light. The property is spread over 2 floors, with an open plan layout on the ground floor creating a spacious living room with a large modern kitchen connected to the dining room and lounge. The large floor-to-ceiling sliding window that overlooks the covered terrace seamlessly blends indoor and outdoor living. Upstairs on the upper floor you will find 3 double bedrooms, the main one with an elegant en-suite bathroom, large dressing room and beautiful views of the Guadalhorce Valley and the garden. There are two further good sized double bedrooms and a family bathroom.

Outside you will find your own private oasis with a relaxing swimming pool, large covered terrace and garden. To the front of the property is a 2 car driveway and a hidden utility area, well designed for washing and additional storage. The property also has solar panels, thermal and acoustic insulation.

This place is very well connected, being only 2km from the center of Alhaurín de la Torre, and very close to the center of Malaga, the airport and the coast. The home is the perfect family or vacation home located in a quiet area with plenty of space and privacy.

Don't hesitate to contact us! Visit us!



Features:

Features

Covered Terrace

Private Terrace

Storage Room

Double Glazing

Utility Room

Pool

Private

Utilities

Solar water heating

Setting

Close To Schools

Garden

Landscaped

Category

New Development

Condition

New Construction

Parking

Garage