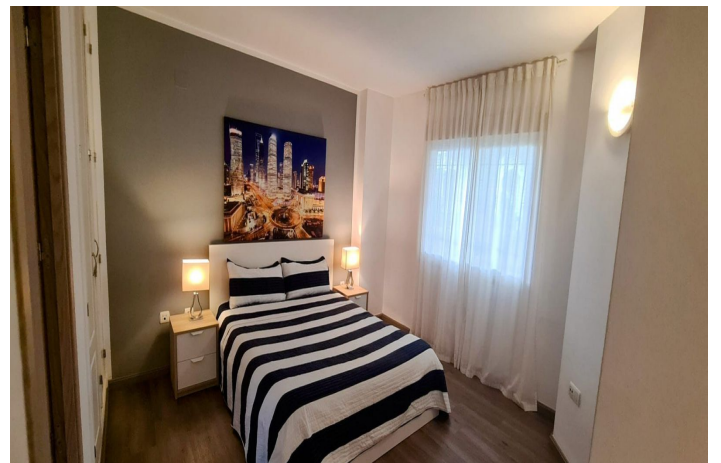




Apartamento Planta Media en alquiler en Nueva
Andalucía, Marbella

2.000 - 2.000 €

Referencia: R4853254 Dormitorios: 2 Baños: 2 Terreno: 115m² Construído: 115m²







Costa del Sol, Nueva Andalucía

Nestled in the heart of Los Naranjos, Nueva Andalucia, this exquisite apartment offers a harmonious blend of convenience, perfect for those seeking a temporary retreat in the vibrant Costa Del Sol. With its prime location, this property is a gateway to the best of Marbella, offering proximity to pristine beaches, world-class golf courses, and a plethora of dining and shopping options.

This beautifully appointed apartment boasts two spacious bedrooms and two well-designed bathrooms, providing ample space for relaxation and comfort. The interior spans 115m², offering a generous living area that is both stylish and functional. The fully fitted kitchen is equipped with modern appliances, ensuring a seamless culinary experience, while the adjacent dining room provides a perfect setting for entertaining guests. The living room, with its tasteful furnishings, offers a cosy retreat for unwinding after a day of exploration.

Tenants will appreciate the apartment's thoughtful design, which includes a private terrace for enjoying the Mediterranean climate and a covered terrace for al fresco dining. The communal pool and garden offer a serene escape, while the private garage ensures convenience and security. The property is situated within a gated community, providing peace of mind and a sense of exclusivity.

The apartment's location is truly unparalleled, with amenities, transport links, and recreational facilities all within easy reach. Whether it's a day at the beach, a round of golf, or a leisurely stroll through the town, everything is conveniently close. The property is in good condition and comes fully furnished, ready for immediate occupancy.



Características:

Características

Terraza Cubierta
Cerca de Transporte
Terraza Privada
Armarios Empotrados
Lavadero
Barbacoa

Vistas

Vistas a Jardín

Piscina

Piscina Comunitaria

Jardín

Jardín Comunitario
CO2 Emission Rating
D

Orientación

Sur

Posición

Cerca de Golf
Cerca de Puerto
Cerca del Mar
Cerca de Tiendas
Cerca de Ciudad
Cerca de Colegios

Muebles

Completamente Amueblada

Aparcamiento

Parking Privado

Climatización

Aire Acondicionado
Chimenea

Estado

Buen estado de conservación

Cocina

Cocina Equipada
Cocina Parcialmente Equipada
Calificación energética
C