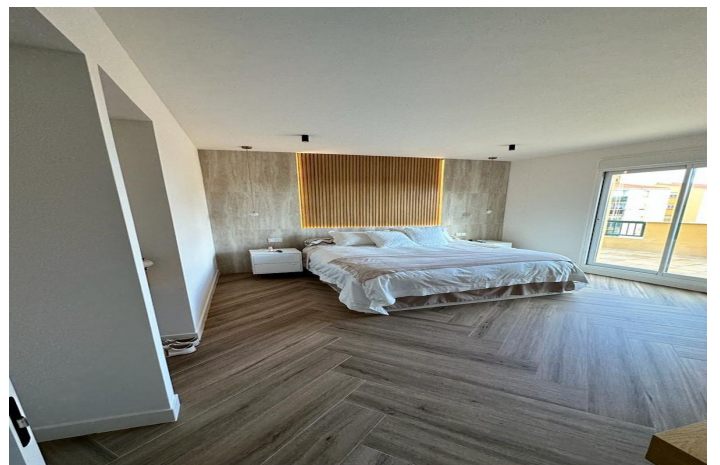




Ático en alquiler en San Pedro de Alcántara, Marbella

3.500 - 3.500 €

Referencia: R4938130 Dormitorios: 3 Baños: 2 Construido: 160m² Terraza: 150m²





Costa del Sol, San Pedro de Alcántara

Stunning penthouse, recently renovated, offers a spacious 160 m² for you to adapt to your lifestyle. Located on the sixth floor of a building with an elevator, you will enjoy spectacular views thanks to its South, East and West orientation. The property has three bright bedrooms and two modern bathrooms, perfect for a family or sharing with friends. The built-in wardrobes offer optimal storage, while the living-dining room is ideal for meetings and moments of relaxation.

In addition, the penthouse is suitable for people with reduced mobility. It includes a parking space in the price and, if you need more space, there is the possibility of having a storage room. For your comfort, the property is equipped with air conditioning.

Enjoy the common areas that include a refreshing pool and a garden where you can relax after a long day.

Available from March 1, 2025, this penthouse is a unique opportunity to live in a privileged location with all the amenities you need. Don't miss this opportunity and make this penthouse your new home!



Características:

Características

Terraza Cubierta
Ascensor
Terraza Privada
TV Satélite
Baño En-Suite
Doble acristalamiento
Armarios Empotrados
Lavadero
Cerca de una Iglesia
Fibra óptica

Vistas

Vistas al Mar
Vistas a Montaña
Vistas Panorámicas
Vistas Urbanas

Piscina

Piscina Comunitaria

Jardín

Jardín Comunitario

Servicios Públicos

Electricidad
Agua Potable
Teléfono

Orientación

Este
Sur
Oeste
Orientación Sureste
Orientación Suroeste

Posición

Área Comercial
Urbanización
Cerca de Tiendas
Cerca de Ciudad
Cerca de Colegios
Ciudad

Muebles

Completamente Amueblada

Seguridad

Alarma
Persianas Eléctricas
Portero Automático

Climatización

Aire Acondicionado
Chimenea
Calefacción Central.

Estado

Excelente estado de conservación
Reformado Recientemente

Cocina

Cocina Equipada

Aparcamiento

Parking Subterráneo
Garaje