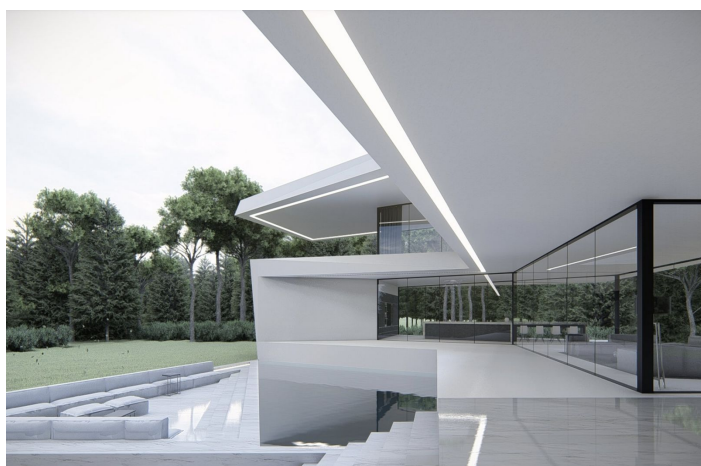
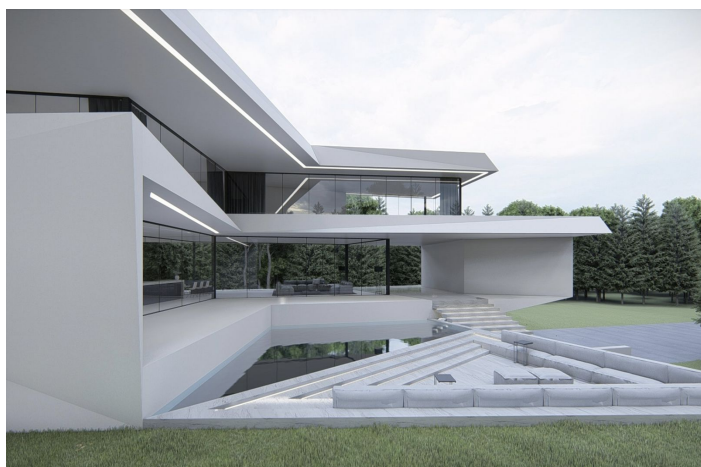




Detached Villa for sale in Benahavís, Benahavís

4,995,000 €

Reference: R4629586 Bedrooms: 7 Bathrooms: 9 Plot Size: 5,000m² Build Size: 870m² Terrace: 560m²





Costa del Sol, Benahavís

OFF PLAN – CONTEMPORARY ECOLOGICAL VILLA IN LA QUINTA, BENAHAIVIS IN URB. LOS ALMENDROS with panoramic views and views and on 6,5 km from the beach.

The ground floor: entrance hall with lift, guest toilet, technical installations room, spacious living/dining room with large open plan fully fitted kitchen with Bosch appliances and separate pantry, furthermore there is on this floor a separate bedroom/study with en-suite bathroom, large, covered terraces overlooking the large 51,50 m2 heated swimming pool.

On the first floor: lift, landing, master bedroom with master bathroom and large dressing room and of course a huge private terrace. A hallway leads you to another 3 bedrooms with 3 bathrooms wherefrom 1 ensuite and a terrace accessible for all 3 bedrooms.

In the semi-basement, you have a huge carport with stairs with a path that leads you to the main entrance.

Furthermore, the lift takes you to this floor where you find another bedroom with a bathroom ensuite, a separate apartment/bedroom and a games room.

There is a completely separate flat which has a living/fitted kitchen/bedroom area, a dressing room and an ensuite bathroom. The separate flat is accessible from the garage but could also be accessed from the lift area.

Construction time approx. 12 to 14 months after licenses.

Pictures of bathrooms and kitchens are just examples of what they could look like, final choice will be that of the clients.

Example of some of the specifications,

- Interior and exterior floor tiles from GRESPANIA 600x600 - 800x800 - 1200x1200 (Color and size to choose)
- Bathroom walls with COVERLAM plates (GRESPANIA) 2700X1200 (Color to choose)
- Bathrooms from ROCA – VILLEROY BOCH – DURAVIT or similar
- Aerothermia/airconditioning
- Elevator from Schindler or similar
- Underfloor heating in the full villa
- Ceiling high windows with a sunken track, 5+5/chamber/6+6
- Ceiling high and 1-meter wide HPL interior doors, 30dB
- Ceiling high pivot entrance door and 1,50 wide
- Fully fitted kitchen with aluminum frame doors and covered with COVERLAM (Color to choose)
- Island with COVERLAM 3600X1600 no visible joints (Colour to choose)
- White goods from Bosch – AEG or MIELE
- Heated pool with automatic cover
- 20 solar panels
- 3 lithium batteries of each 10kW
- Car charger
- Domotica

We are a construction company, Key-in-Hand, that can design and construct any possibility you can think of. If you do not see a design of us that you like we design a totally new villa for you according to your ideas and input.

Although we prefer to construct ecological building, we can construct from traditional construction to ecological constructions it all depends on you.



Features:

Features

Covered Terrace
Lift
Private Terrace
Storage Room
Ensuite Bathroom
Double Glazing
Fitted Wardrobes
WiFi
Tennis Court
Guest Apartment
Guest House
Utility Room
Jacuzzi
Barbeque
Domotics
Basement
Fiber Optic
Access for people with reduced mobility

Views

Mountain
Panoramic
Country
Garden
Pool
Urban
Street

Pool

Heated
Private

Garden

Private
Easy Maintenance

Utilities

Electricity
Drinkable Water
Telephone
Photovoltaic solar panels
Solar water heating

Orientation

East
West
South East
South West

Setting

Close To Golf
Urbanisation
Close To Shops
Close To Town
Close To Schools

Furniture

Optional

Security

Alarm System
Entry Phone
Safe

Category

Holiday Homes
Investment
Golf
Luxury
Off Plan
Contemporary

Climate Control

Air Conditioning
Cold A/C
Hot A/C
Fireplace
U/F Heating
U/F/H Bathrooms

Condition

New Construction

Kitchen

Fully Fitted

Parking

Underground
Garage
Private
Covered
Open
More Than One

