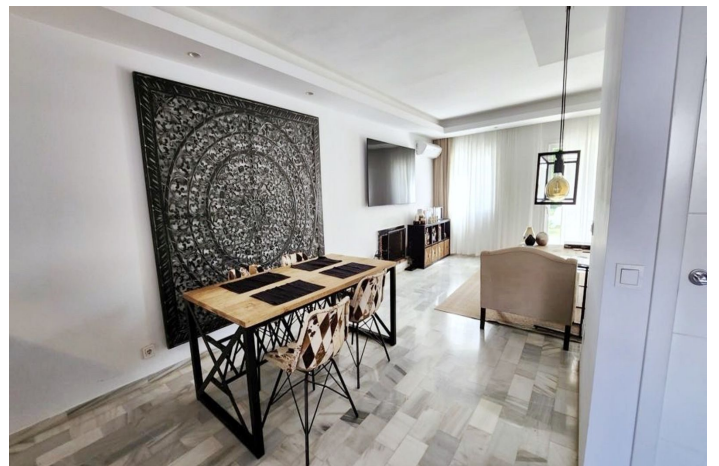




Duplex for sale in Nueva Andalucía, Marbella

750,000 €

Reference: R4895575 Bedrooms: 3 Bathrooms: 3 Build Size: 150m² Terrace: 12m²





Costa del Sol, Nueva Andalucía

THE PROPERTY

Imagine yourself entering a spectacular duplex apartment in the heart of Nueva Andalucía, Marbella. This elegant home features a unique layout that offers comfort and privacy, feeling more like a townhouse than an apartment.

On the ground floor, a modern open kitchen merges with a cozy living room, both with access to a large terrace that overlooks a lush community garden, providing a feeling of serenity and connection with nature.

The ground floor also houses a toilet, providing practicality to daily life.

Climbing the stairs, the upper floor reveals three charming bedrooms, one of them currently used with a dressing room. The master bedroom features a luxurious en-suite bathroom, while the other two share an elegant additional bathroom.

This duplex, completely renovated, exhibits a modern and bright design, highlighting attention to detail.

Located in an exclusive urbanization, enjoy sunny days in the community pool surrounded by well-kept gardens, creating an idyllic environment in which every day becomes a unique experience.

This home is more than an apartment; It is a haven where elegance meets comfort in the heart of vibrant Nueva Andalucía.

AREA

The exclusive Miragolf urbanization, located in the heart of Aloha, Nueva Andalucía, is an oasis of luxury and tranquility.

Surrounded by golf courses and majestic villas, it offers an idyllic setting for those seeking a distinguished lifestyle.

Close to the prestigious Aloha School, the area is perfect for families who value quality education.

The proximity to shops and restaurants provides convenience, while the proximity to the famous Puerto Banús adds a touch of glamour.

However, this proximity is balanced with the serenity that Aloha's nature provides, thus creating a perfect setting for those who want to enjoy the best of both worlds in an exclusive and sophisticated environment.



Features:

Features

Covered Terrace
Private Terrace

Views

Mountain
Garden

Pool

Communal

Security

Gated Complex

Orientation

East
West
South East

Setting

Close To Golf
Close To Port
Urbanisation
Close To Sea
Close To Shops
Close To Town
Close To Schools
Close To Marina

Kitchen

Fully Fitted

Parking

More Than One

Climate Control

Air Conditioning

Condition

Excellent
Recently Renovated

Garden

Communal

Category

Investment
Bargain
Golf
Luxury
Resale