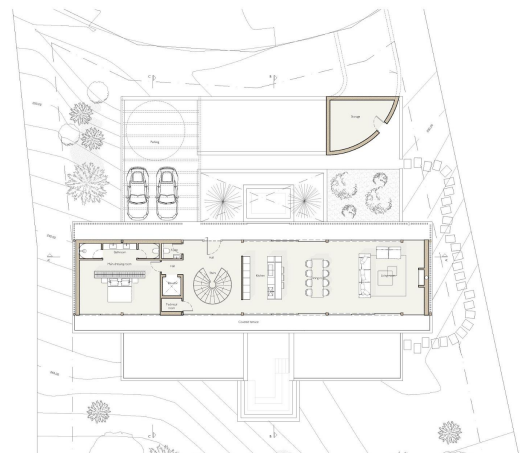
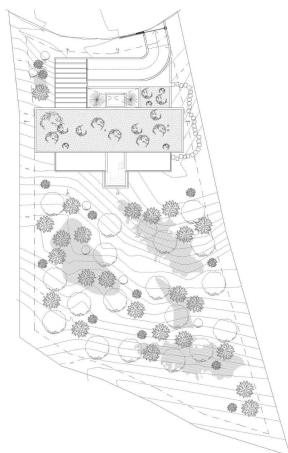




Detached Villa for sale in Benahavís, Benahavís

3,500,000 €

Reference: SP0658 Bedrooms: 5 Bathrooms: 5 Plot Size: 3,277m<sup>2</sup> Build Size: 547m<sup>2</sup> Terrace: 530m<sup>2</sup>





## Costa del Sol, Benahavís

### NEW BUILD LUXURY VILLA IN BENAHAVIS

This New Build Luxury villa is a perfectly located gem in the heart of Monte Mayor, Benahavis.

This villa offers a unique design and development concept that seamlessly combines elegance and functionality.

With a plot size of 3,277 m<sup>2</sup> and a total built area of 1,077.65 m<sup>2</sup>, this villa boasts 5 exquisitely designed bedrooms and 5 full bathrooms, plus 2 additional guest toilets.

The entrance main floor hosts an impressive open plan living area with kitchen, dining and living spaces, and the master bedroom.

In the lower floor of the property, you'll be greeted by an interior courtyard that adds a touch of serenity and Mediterranean charm. The four bedrooms articulated around the jacuzzi patio and the extensive covered terraces, adorned with a sleek elongated pool, creates an atmosphere of relaxation and luxury that invites you to embrace the outdoor living.

Every corner of this home has been carefully crafted to provide maximum comfort and privacy for its residents. Generous indoor and outdoors entertainment spaces make this villa the perfect setting for hosting family and friends. Whether enjoying an al fresco dinner on a warm summer night or cozying up in the inviting living room by the fireplace in winter, you'll find the perfect backdrop here to create unforgettable moments.

Furthermore, thanks to its central location in Monte Mayor, you'll enjoy the tranquillity and privacy offered by this exclusive gated community while still being just a short drive away from beaches, golf courses, and all the amenities the Costa del Sol has to offer.

Don't miss the opportunity to make this Villa your home and discover the true meaning of Mediterranean paradise living!



## Features:

### Features

Near Commercial Center  
Gated  
Beach: 7000 Meters  
Number of Parking Spaces: 2  
Double Bedrooms: 5  
Near Schools  
Elevator/Lift  
Garden  
Views: Sea  
Location: Coastal, Urbanisation  
Private Pool  
Air Conditioning: Pre-Installed  
Useable Build Space: 430 Msq.  
Terrace: 530 Msq.

### Energy Rating

B

### CO2 Emission Rating

B